

Visual Story

Welcome to Bolling Hall Museum and Library

This visual story is for visitors who may have accessibility needs, are neurodiverse or simply curious about visiting. We want you to be able to plan a visit and know what to expect. It has information about how you can get here, what facilities we have and how you can get around the building.

An aerial shot of Bolling Hall in the grounds, image by Phillip Jackson.



Bolling Hall was the ancestral home of the Bolling and Tempest families. It was given to Bradford council in 1912 and turned into a museum in 1915 for the people of Bradford to see how people lived in the past.

We also have a small community library, which you can join and borrow books, audio stories and jigsaws.



Image by Phillip Jackson.

How to get here

Bolling Hall is next to Bowling Park, and is 1.2 miles from Bradford City Centre, along the A650 (Wakefield Road).

We have a car park. It is situated on Brompton Avenue; this is at the rear of our building.

The car park has two designated bays for blue badge holders and those with mobility issues.



The car park entrance from Brompton Avenue.

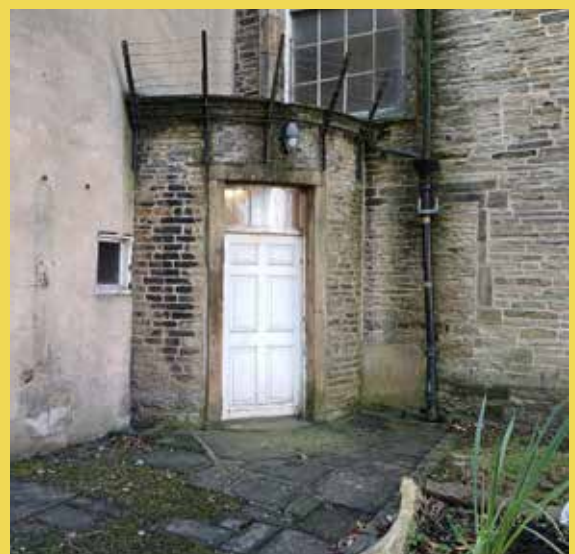


The access bays in the car park. The white door in the background is where you would need to come if you were using a wheelchair. This gives access to the ground floor and Library.

Please alert a member of staff if you need to use this door, either by sending a member of your group to report to reception, or by calling reception on 01274 431826.

The what3words location of the carpark is [scafe.lovely.pans](https://www.what3words.com/scafe.lovely.pans).

The carpark is free.



Bolling access door. A white door on the left side of the building, as you approach from the car park.

Other transport links

The best railway station to use to get to Bolling Hall would be Bradford Interchange, which would be a better option for transport links.

From Bradford, you can get the 256,263,283,425,617,618 buses to Bolling Hall. You would need to get off at the PDSA animal hospital and cross over the road to walk down Lister Avenue. At the end of Lister Avenue turn right onto Bowling Hall Road to bring you to the entrance steps of Bolling Hall.



The entrance to Bolling Hall from Bowling Hall Road, opposite Bowling Park. This is four flights of stairs with around eight steps in each set.

If you do not want to use the steps simply continue walking along Bowling Hall Road and turn right onto Brompton Avenue, a short walk up the avenue will bring you to our car park.

You can use the journey planner on [Plan a journey | Metro \(wymetro.com\)](https://www.wymetro.com)

Bolling Hall's What3words location is [///voter.lamp.tasty](https://www.what3words.com/voter.lamp.tasty)

When you arrive

The main entrance is up a flight of stairs from the park side and around the other side of the building from the car park. It is a heavy brown door so you may need to push harder than you normally would when coming into the building.

The receptionist will greet you as you enter. Visitor assistants are friendly and will be wearing a uniform with the museum and Bradford council logo on it. All museum and gallery staff wear a blue lanyard. If you have any questions or require assistance, please speak to a visitor assistant.

The reception also has a small gift shop with lightly smelling soaps on display. The area is well lit and has stone slab floor, so it may be a little uneven in places.

Floor plans will be available on reception so you will know where you are within the building.

We have an Audio Frequency Induction Loop system on the reception desk.



The entrance to Bolling Hall. A brown door with diamond lattice lead on the windows.



The reception desk at Bolling Hall is just inside the door.

The Hall is free, but we welcome ‘Pay What You Decide’ donations suggested at £3.00 per person.

As we are a small museum there is no provision for storage. Therefore, we cannot look after large bags of belongings.

Assistance dogs are welcome, but we ask that are kept under control throughout the visit to protect the objects in the museum and please be aware that some visitors may be frightened of animals.

Visitor assistants will check with you if the dog is an assistance animal and has the appropriate licence and coat.

Due to the large number of stairs, we ask that you leave your prams in the spaces below.



The gift shop sells a small selection of toys, pocket money toys and historical coins.



The first place to store prams is to the right of the entrance as you enter (picture on the left).



The second storage option is just beyond the gift shop in the warm kitchen (picture below).

Access

At this time, we do not provide access to the first floor for wheelchair users and those that cannot manage the stairs.

We do have a space on the ground floor that you can access and watch a short film on Bradford.



The small seating area is just before the House body,



Here you can enjoy highlights of Bradford's historical past.

Toilets

We have gender neutral accessible toilets on the ground floor, next to the Georgian drawing room. We have male and female toilets on the ground floor. Baby changing facilities are available in the accessible toilet.



Accessible toilet and baby changing facility.

The nearest Changing Places facility is St Lukes Hospital, Little Horton Ln, Bradford Yorkshire, BD5 0NA. This is just under a mile away from Bolling Hall. More information is available at [Changing Places Toilets](#).

Around the Museum

Quiet Space - Bolling Hall is a quiet museum. If there is an amount of noise and you need to find a quieter area we have designated the **Cold kitchen** as a quiet space.

You can get to the cold kitchen by walking through reception and into the **Warm kitchen**. In the warm kitchen you will see a large fireplace, to the right of this fireplace is a door that will lead you into the cold kitchen.



The Cold kitchen is located at the back of the building. It has a table and benches where you can sit and rest.

During term time this area may be in use as a workshop space for visiting schools, so it may be wise to ring ahead when planning your visit.

Seating

You will find that there are many chairs at Bolling hall. Most of these chairs are incredibly old, and we ask that you do not sit on those, as we would like to keep them in good condition for future generations to see. These chairs will have a red or white string attached to the handles, or a sign that says, **'please do not sit on this chair.'**

The chairs you can sit on will be made of modern materials (metal/plastic/pine) and will be outside of the rooms.



An antique chair with a red string across the seat, tied at the handles. This chair is in the House body.



A modern pine chair with a rounded back. This chair is opposite the Parlour.

Taxidermy

Bolling Hall has objects of taxidermy on display. We understand that this can be distressing to people so we have brought these objects to your attention, and where you can find them, below.



The rabbit is hanging by the window in the Warm Kitchen.



A Boar's head mounted on a wall. A wall with antlers and weapons. Both these are in the House body.



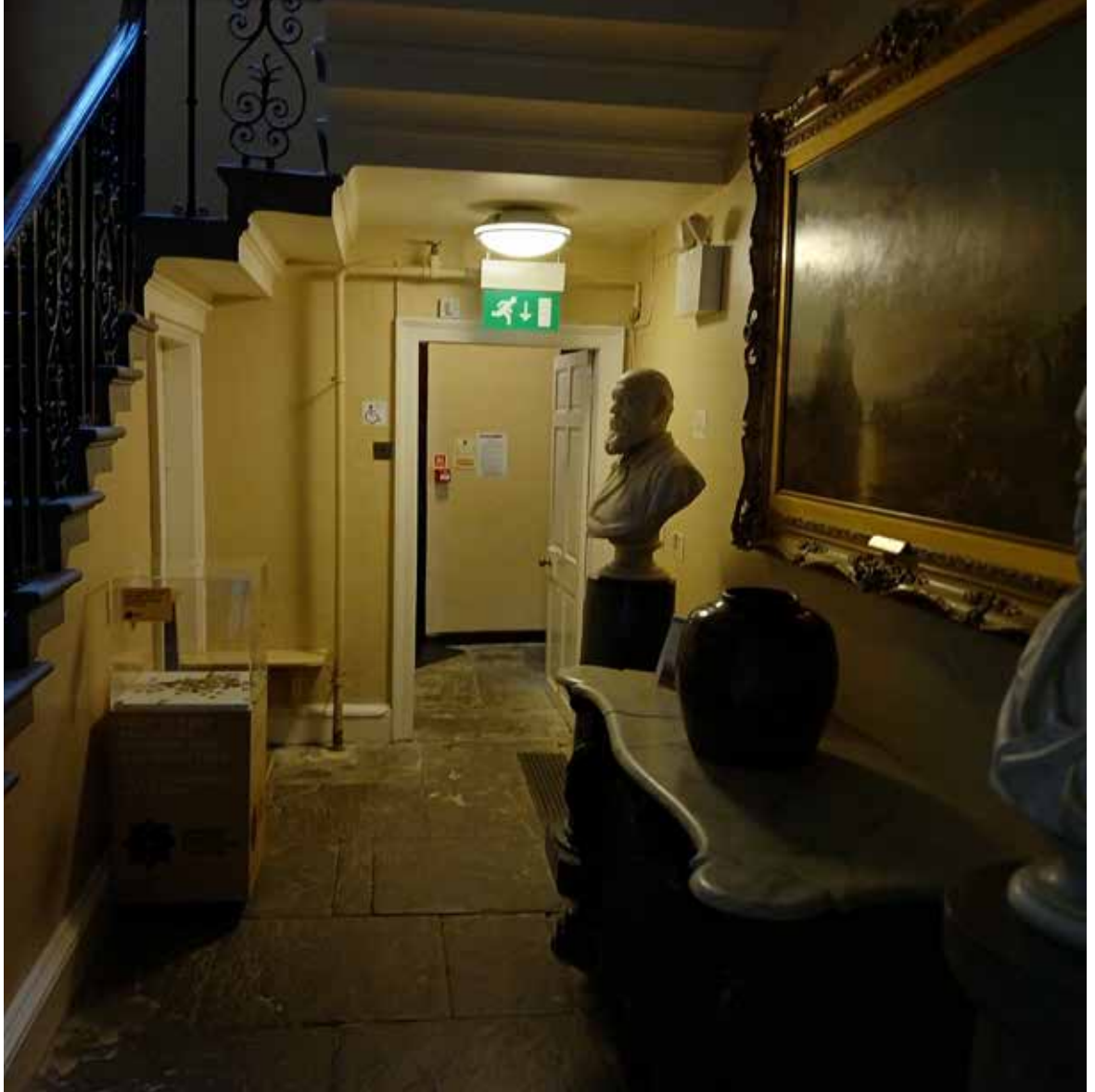
A small pug in the Georgian Drawing Room.



If you do not wish to see these, there are alternative routes around the museum. If you ask the visitor assistants, they will be able to point out alternative routes for you.

Poorly lit areas

Throughout the museum we have tried to make areas as open and well lit as possible. Unfortunately, there are going to be areas of low light. This is due to the buildings age and design.



A dimly lit corridor leading to the toilets.

Where possible we have placed spotlights to help you see better, however this is not possible in some rooms. One example of this is the **Red Couch room**.

Barriers

When you walk round the museums, you will find that some rooms are cordoned off with a heavy rope. You can still see the rooms but please do not go over the rope. If you go over these ropes an alarm will sound, and it is extremely loud.

If you are sensitive to noise, please be aware that this could happen on your visit, as the alarm sensors are very sensitive. A visitor assistant will turn the alarm off when they have checked it is safe to do so, this may take a few minutes.

When you see these barriers, it is best to keep slightly away from them and enjoy looking at the objects from behind the rope.



A picture of a rope across part of a room. This rope is in the Study.

The ropes in our museum are **dark blue** and **red**.

Library

Bolling Hall has a small community library that can be found at the side of the **House body**.

If you are already a member of Bradford Libraries you can use this library, but if you are not one of the volunteer librarians will help you join. In this library you can take out books, audiobooks and Jigsaws.



A brown wooden door with a welcome sign outside it.



A reading space with table and chairs, shelves, and a desk.

There is also a computer station in this library. You can come here and print off work for a small charge.



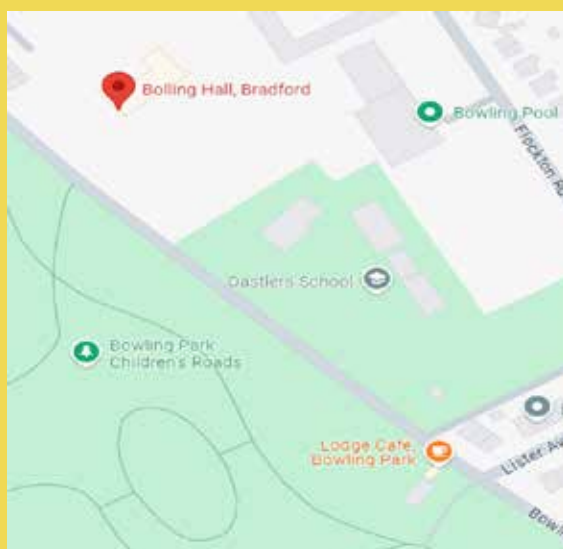
The library is usually open when we are open. However, as this is a volunteer run library, there will be occasions when the library will have to close.

If you are planning to use this facility when you visit it may be best to ring ahead to check if it is open.

Things to consider

Bolling Hall does not have a café. The nearest café is the **Lodge café in Bowling Park**.

To get to this café leave Bolling hall and walk down the four flights of steps. At the bottom of the steps turn left and walk for around two to five minutes up Bowling Hall Road. There will be a sign on your right for the lodge café.



The location of the Lodge café to Bolling Hall.

The exit of Bolling Hall is the same door you entered in. There are fire exits around the building. These will be highlighted by the green 'running man' sign above them, but you will leave through the same door you entered.

Bolling Hall has been around for centuries and has a lot of history within its walls, particularly the Civil war period. We hope you enjoy finding more about this when you visit.