

Please take a look around



1



Down the hall to -- then see -->

3



'Shall we dance?'



2 Look close

Mineral Magic

4



find --

next --

5



Choose a favourite creature

through --

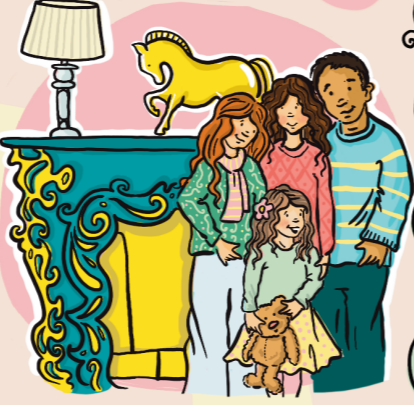
6



Have you Seen these before?

7

then to -->



Imagine living here!

8

10



Conservatory and shop

9



the last pub -->



If you are interested in exploring further here are some ideas

THINK of faces for the stained glass window.

PICNIC in the park or visit the Pavilion Café.

EXPLORE the park, the pond and fountains.

LOOK upstairs.

FIND clues to the Butterfield's love of music.

TRY a CCSG activity – there are several.

Explore the museum online: [bradfordmuseums.org/venue/cliffe-castle-museum](http://bradfordmuseums.org/venue/cliffe-castle-museum)

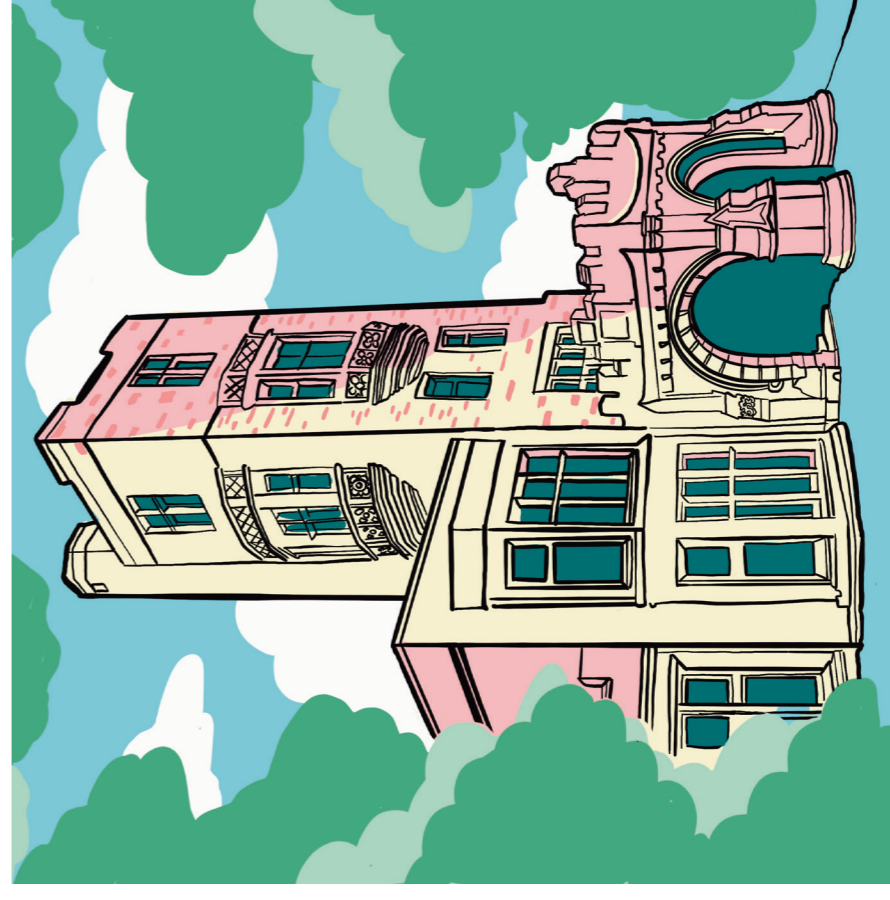
Contact Cliffe Castle Support Group (CCSG): [www.facebook.com/Cliffecastle.supportgroup](http://www.facebook.com/Cliffecastle.supportgroup)

The wording in this publication can be made available in other formats. Please call 01535 618231



# Cliffe Castle

Spring Gardens Lane,  
Keighley, BD20 6LH



This guide is for you as a first time visitor to help you discover the museum. The guide is for the ground floor – if you are able, explore upstairs too.

Opening Times – Free Entry  
Monday Closed (except Bank Holidays)  
Tuesday – Friday 10am – 4pm  
Saturday – Sunday 11am – 4pm



### 1 The Story of Our Dale

A giant amphibian once lived in this valley. See its replica here and find it embroidered into the panorama of life's development on the wall.

### 2 The Egyptians

X-rays help understand the hidden history of Egyptian mummification. Look closer at the fine detail here.

### 3 The Octagon

A display space for paintings, exhibiting items, and for music concerts. The Greek key design above is in real gold.

### 4 The Crystal Cave

Explore this marvellous mineral collection. So many colours and fantastic shapes. Some you can touch, some even glow!

### 5 Feathers, Fur, Fins and Fangs

See natural life close up thanks to Victorian taxidermy. Once a Ballroom (see the high-up carvings) there's now bird song instead.

### 6 Unearthing the past

From coins and carvings to kitchen implements – what past Airedale generations have left behind. What will we leave?

### 7 Tools of the trades

Examine the equipment, from field to forge that local skilled trades people used to produce what we needed. Many are still useful today.

### 8 The Family Rooms

Experience Victorian high-class luxury. Amazing Interiors. Glitter and extravagance on, or hanging from, every surface. Can you imagine living like this?

### 9 Hallway & Grand Stairs

Displays of community projects and curious items, a rare conical pendulum clock, glorious stained glass – so much to admire.

### 10 Shop & Conservatory

Buy a memento, trace the Butterfield family tree or the history timeline, sit and eat your sandwich, chat, keep out of the rain.

## Explore discover and enjoy

Cliffe Castle was owned by a wealthy Victorian family, called the Butterfields and many items inside were collected by them.

The Butterfield family crest features a dragon, so look for it around the museum.

After the Butterfield family left Cliffe Castle Sir Bracewell Smith bought the Castle in the 1950s and donated it to the people of Keighley to visit and enjoy. The house was repaired and became a new home for the collections of the Keighley Museum.

You will find a suggested route, a short description of each room and a floor plan in this guide - the colours help you find your way.

With so many different displays in the museum there is something for everyone to enjoy and there are many activities for families and schools all through the year.

## Tips for your visit

**ANY QUESTIONS JUST ASK THE STAFF** – the team are there to help.

**PHOTOS** – for personal use only.

**ACCESS DOGS** – are welcome in the museum.

**ACCESSIBLE ENTRANCE** – is through the Conservatory; please press the doorbell at the side of the door.

**ACCESSIBILITY AND MOBILITY FEATURES ARE AVAILABLE** – if you need help please ask the staff.

**TOILETS** – down the corridor on your left (Men's & accessible are before the "Egyptian Gallery" – Women's are after the Egyptian Gallery).

**FREE TRANSLATION** – if you have a smart phone there are "apps" that can translate the museum texts. These "apps" can also be used to translate talking.

